



# DRY PIPE VALVE MODEL G-3 4" & 6"

## DESCRIPTION AND OPERATION

The Globe Model G-3 Dry Pipe Valves are the vital control unit in dry pipe automatic sprinkler systems, where supervisory air under pressure is used to prevent freezing that would certainly occur with ordinary wet pipe systems. The Dry Pipe Valve is the connecting link between the source of water supply and the automatic sprinklers, and must react promptly when it receives a signal from the protected area that a fire condition has developed and water is therefore quickly needed. This signal is generated by the opening of one or more sprinklers which causes a quick drop in system supervisory air pressure resulting in a loss of the differential ratio.

The single clapper assembly design in the Globe Model G-3 Dry Pipe Valves, provides several areas exposed to working pressures which, in combination, create a differential force ratio between system air pressure and water supply pressure. A single-latching lever is provided as a means of holding the clapper in "set" position. Once the valve has operated, a special latch holds the clapper open until manually reset by experienced personnel.

The body of the Dry Pipe Valve is constructed of high tensile strength cast iron having considerable ductility to reduce damage in field handling.

All interior operating parts are machined from highly corrosive-resistant copper alloys, each having high strength and good wear resistance.

Rubber parts are of selective materials which have good abrasive resistance and long life expectancy in terms of resiliency.



**MODEL G-3  
FLANGE/GROOVE**

## APPROVALS

- cULus Listed
- FM Approved
- CE EN 12259-3:2000
- NYC - DOB MEA 324-91-M

## TECHNICAL DATA

- Water Working Pressure Rating - 175 psi (12 bars).
- Factory tested hydrostatically to 350 psi (24 bars).

WATER PRESSURE P.S.I.	AIR PRESSURE REQUIREMENTS P.S.I.	
	MINIMUM	MAXIMUM
30	15	20
50	20	25
75	25	30
100	30	35
125	35	40
150	40	45
175	45	50

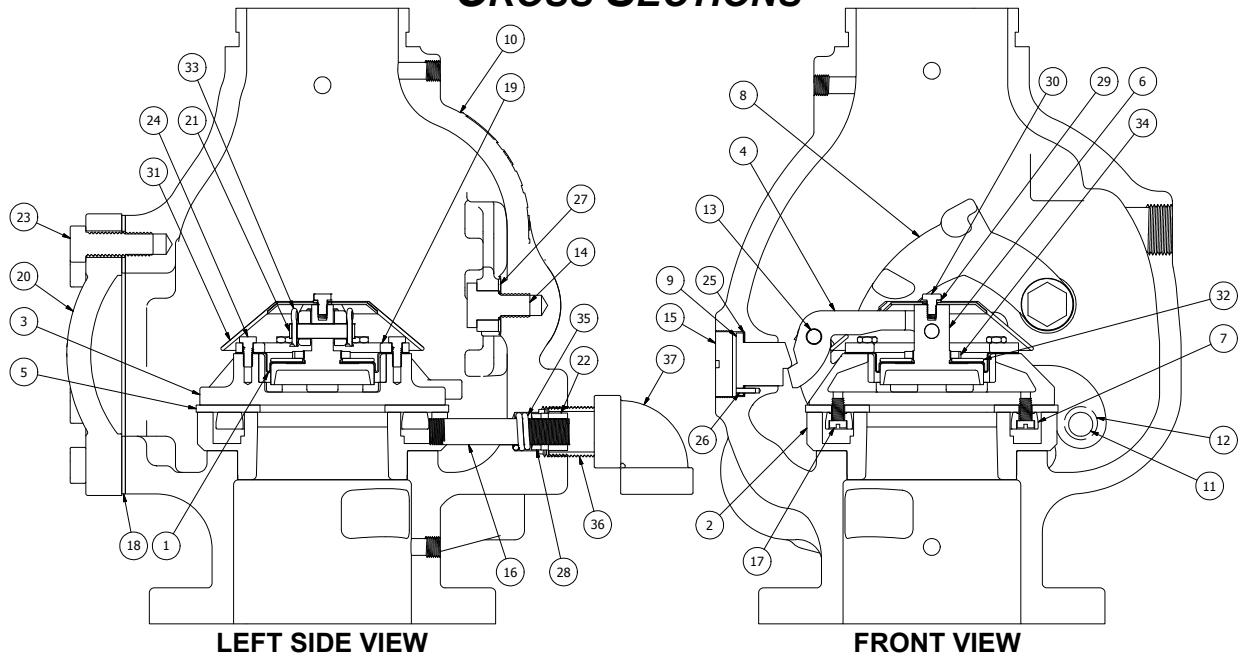
PHYSICAL DATA	G-3	
	4"	6"
SIZE	4"	6"
Overall Length	16"	16 1/2"
Center of Valve to Back	11"	12"
Center of Valve to Right	12"	12"
Center of Valve to Left	10"	11"
Weight of Valve	151 lbs.	221 lbs.
Complete with all Trimmings	169 lbs.	239 lbs.
Minimum Inside Dimensions of Enclosing Valve House	45" x 52"	45" x 52"
Friction Loss in Equivalent Feet	19'-6"	31'-0"

# DRY PIPE VALVE

## MODEL G-3

### 4" & 6"

### CROSS SECTIONS



LEFT SIDE VIEW

FRONT VIEW

ITEM	DESCRIPTION	MAT'L	4" P/N	6" P/N	ITEM	DESCRIPTION	MAT'L	4" P/N	6" P/N
1	Bellofram	EPDM	319794	319844	20	Cover	Cast Iron	319767	319814
2	Seat Ring	Bronze	300014	300213	21	Pin	Bronze	300011	300210
3	Clapper and Ring Assembly	Bronze	319779	319821	22	Packing Nut	Bronze	300025	300025
4	Lever	Bronze	319757	319807	23	Cover Bolt (7) (8)	Steel	319768	319815
5	Rubber Seat Ring	EPDM	319791	319841	24	Cap Screw (6)	Bronze	319760	319760
6	Compression Plate	Bronze	319752	319802	25	Rubber Gasket	Rubber	300030	300030
7	Retaining Ring	Bronze	319792	319842	26	Pin	Brass	300031	300031
8	Clapper Latch	Bronze	300015	300214	27	Bronze Washer	Bronze	300032	300032
9	Locking Stud	Bronze	300016	300215	28	Packing Gland Ring	Bronze	300035	300035
10	"G-3" Body	Cast Iron	319704	319812	29	Lock Washer	Bronze	319761	319761
11	Hinge Pin	Bronze	300018	300217	30	Cap Screw	Bronze	319762	319762
12	Bushing	Bronze	300019	300218	31	Shield	Elastomer	319758	319808
13	Pin	Bronze	319798	319845	32	Memory Washer	Brass	319763	319811
14	Latch Screw	Brass	300020	300020	33	Cotter Pin	Brass	300211	300211
15	Plug	Bronze	300021	300021	34	Nut	Brass	319756	319806
16	Atmospheric Discharge Tube	Brass	319766	300022	35	Packing	PTFE	300036	300036
17	Retaining Ring Screw (6)	Bronze	319778	319778	36	1" Close Galvanized Nipple	Galvanized	310303-G	N/A
18	Cover Gasket	Rubber	300023	300219	37	1" Elbow	Steel	311205	311207
19	Clamping Ring	Bronze	319793	319843	N/S	Cover Release Screw	Stainless	300012	300012

Refer to Globe's Dry Pipe Valve Installation and Maintenance Guide (Bulletin D.P.V.I.M.) for trim set-up, installation instructions, and maintenance.

### ORDERING INFORMATION

#### SPECIFY

- Quantity • Model Number • Size • Pressure Rating
- Factory Trimmed and Leak Tested Hydrostatically or Loose Trim for Customer Installation.

### GLOBE® PRODUCT WARRANTY

Globe agrees to repair or replace any of its own manufactured products found to be defective in material or workmanship for a period of one year from date of shipment.

For specific details of our warranty please refer to Price List Terms and Conditions of Sale (Our Price List).

