

MODEL QD QUICK DRAIN FLEXIBLE HOSE

GENERAL DESCRIPTION

The Globe Model QD Quick Drain flexible hose connection can be utilized for connecting the Test and Drain Valve of a floor control assembly to the building drain stack connection. This flexible drain is equipped with female swivel connections at each end and is 18" long. The QD flexible Quick Drain consists of corrugated conduit with Stainless braided covering. The Quick Drain connection eliminates the need for field measuring and cutting of multiple pipe lengths as well as the need for multiple threaded or grooved fittings and swing joints to make the connection. Every hose has been factory tested to 450 psi. The QD "Kit" comes complete with an additional brass 45° elbow (male x male) to facilitate installation if desired.



Note: The QD Flexible Drain Hose comes equipped with both flat and shoulder Teflon washers for each swivel end. To prevent leakage, the shoulder washer should be used when attaching a schedule 40 nipple onto the swivel fitting. The flat washer should be utilized when attaching a threaded fitting onto the swivel end.

*** Patent Pending**

TECHNICAL DATA

Factory Tested to 450 psi (31 bar)

Materials of Construction

- AISI 304 Stainless Steel

ORDERING INFORMATION

SPECIFY:

- MODEL • SIZE • PN

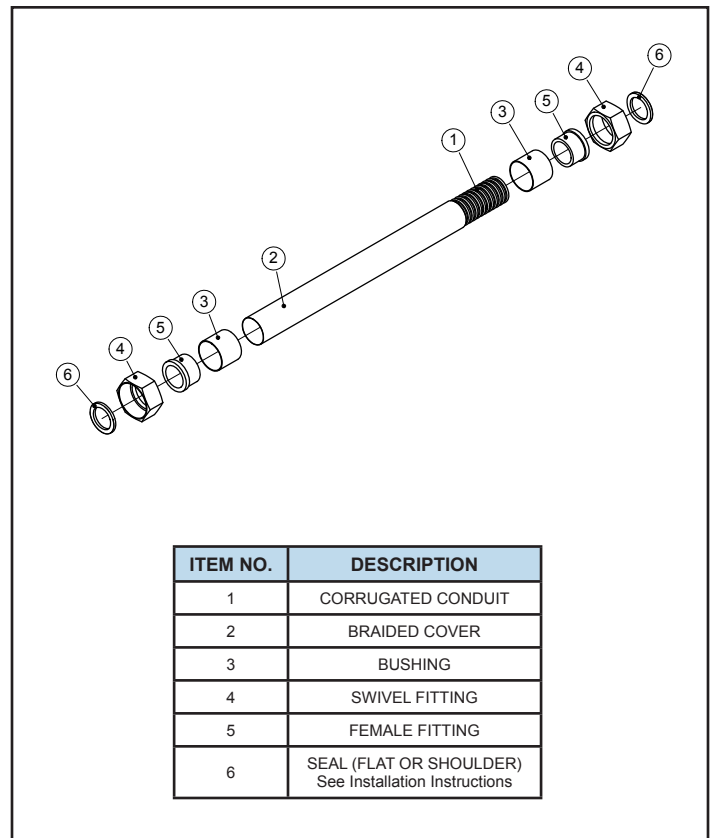
MODEL QD QUICK DRAIN HOSE KIT
(includes brass 45 elbow MTxMT)

SIZE	PART NUMBER
1"	338054-18
1 1/4"	338055-18

MODEL QD QUICK DRAIN (HOSE ONLY)	
1"	338051-18
1 1/4"	338052-18
2"	338053-18

SPARE WASHERS

1" Flat	338067
1" Shoulder	338057
1 1/4" Flat	338075
1 1/4" Shoulder	338058
2" Flat	338083
2" Shoulder	338059



QUICK DRAIN HOSE KIT

PARTS LIST:

Description	Quantity
• Quick Drain Hose	1
• 45° Brass El MT x MT	1
• Flat Washer	2
• Shoulder Washer	2



INSTALLATION

Sch. 80 & Wide Ended Fittings use Flat Washer

STEP 1. Thread elbow into Swivel nut end.



STEP 2. Tighten Fitting.



In case of tight fitting or oversized male threads:

- An added flat washer can be used in the hose end to make a tight joint in the Swivel Nut regardless of original washer type.



Sch. 40 & Narrow Ended Fittings use Shoulder Washer

STEP 1. Align narrow end towards Pipe/Nipple.



STEP 2. Press washer into Pipe/Nipple.



STEP 3. Tighten Swivel nut into Pipe/Nipple.



GLOBE® PRODUCT WARRANTY

Globe agrees to repair or replace any of its manufactured products found to be defective in material or workmanship for a period of one year from date of shipment.

For specific details of our warranty please refer to Price List Terms and Conditions of Sale (Our Price List).

