



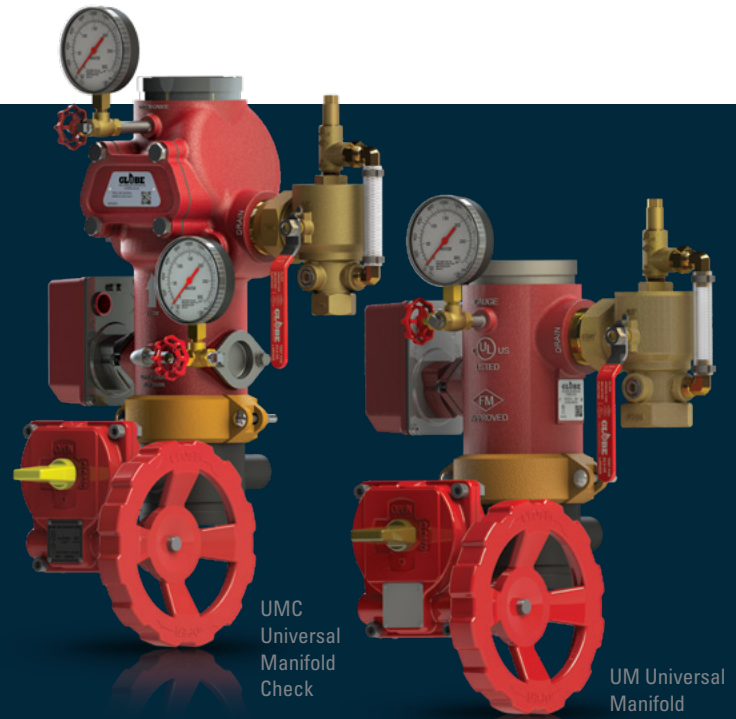
MULTIPLE PATENTS PENDING

UM

UNIVERSAL MANIFOLD

UMC

UNIVERSAL MANIFOLD CHECK



UMC
Universal
Manifold
Check

UM Universal
Manifold

COMPLETE SHOTGUN RISER ASSEMBLIES:

INTEGRATED CHECK VALVE* | CONTROL VALVE
TEST & DRAIN | ADJUSTABLE RELIEF VALVE
SYSTEM GAUGE(S)

The revolutionary design of the Globe UM Universal Manifold and the UMC Universal Manifold Check integrates all the necessary components for a shotgun riser into a single assembly. This saves you time at every step of the design, fabrication, purchasing and installation process: one submittal, one takeout, one part number, one PO and one box.

The UM/UMC is UL Listed and FM Approved in multiple configurations, and is rated for systems with pressures up to 300 psi. The multiple configurations, pressure rating and small footprint allow the UM/UMC to overcome site-specific installation challenges in the field.

SAVE SPACE. SAVE TIME. SAVE MONEY.

- Straight out of the box, the unit integrates all necessary pre-mounted components: control valve, check valve,* flow switch, test and drain, adjustable pressure relief kit and gauge(s).
- Compact design saves valuable space in tight-quarter installations.
- Available in a variety of sizes to meet nearly any application.
- Optional quick-drain flexible hose connector.

*UMC only

SHOTGUN RISER ASSEMBLY

Shotgun riser assemblies are typically installed in vertical orientations on individual system risers. The Globe “Shotgun” Riser Manifold Assembly is available in 4", 6" and 8" sizes and is equipped with:

- Control valve
- Check valve*
- Flow switch
- Test and drain valve with NFPA required pressure relief valve
- System and supply* gauges

The 4", 6" and 8" assemblies are equipped with a pressure gauge on both system side and supply side of the check valve clapper*.

*UMC only



UMC Universal Manifold Check



UM Universal Manifold

TECHNICAL SPECIFICATIONS

Approvals:

- cULus Listed and FM Approved

Maximum system working pressure:

- 300 psi (20.6 bar)

Dimensions and weight:

UM

| Size | Take-Out Dimensions With Butterfly Valve | Shipping Weight** |
|------|--|-------------------|
| 4" | 13.5" | 61 |
| 6" | 14.2" | 89 |
| 8" | 18.0" | 123 |

UMC

| Size | Take-Out Dimensions With Butterfly Valve | Shipping Weight** |
|------|--|-------------------|
| 4" | 19.1" | 85 |
| 6" | 22.6" | 125 |
| 8" | 30.0" | 204 |

**Approximate

JOIN THE REVOLUTION!

By combining all the necessary components of a shotgun riser assembly into one unit, the Globe UM/UMC revolutionizes system installation. It saves installation time — and, as we all know, time is money.

To learn more about the Globe UM/UMC assembly, contact your local Globe territory manager, contact our customer service team at (989) 846-4583 or visit globesprinkler.com/umc.



© 2018 Globe Fire Sprinkler Corporation.
All Rights Reserved. 4/18-0009-01

Technical Support
+1 989-414-2600
techservice@globesprinkler.com

Customer Service
+1 989-846-4583
domesticsales@globesprinkler.com
internationalsales@globesprinkler.com

globesprinkler.com